



**RED SEA SCHEDULE 2022**  
**BLUE FORCE 2 & BLUE FORCE 3**

**Cruises with availability & -200 € discount Last Places OFFER!!!**

(Update October 14, 2022)

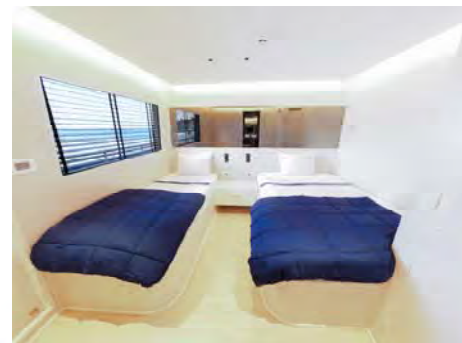
2022	SHIP	ROUTE	NIGHTS	Embarkation / disembarktion
October 22 - 30	Blue Force 2	Extended North <b>OFFER!!!!</b>	7+ 1	Sharm El Sheikh
October 22 - 30	Blue Force 3	Top Red Sea (North & Brothers) <b>OFFER!!!!</b>	7 + 1	Hurghada
Oct 29 – Nov 6	Blue Force 2	Extended North	7 + 1	Sharm El Sheikh
November 5 - 13	Blue Force 3	Daedalus – Zabargad – Rocky – St. Johns <b>OFFER!!!!</b>	7 + 1	Port Ghaleb
November 12 - 20	Blue Force 3	EBS (Elphinstone - Brothers - Salem) <b>OFFER!!!!</b>	7 + 1	Port Ghaleb / Hurghada
November 19 - 26	Blue Force 3	BDE (Brothers – Daedalus - Elphinstone)	7 + 1	Hurghada
November 19 - 27	Blue Force 2	Extended North	7+ 1	Sharm El Sheikh
December 3 - 11	Blue Force 2	Extended North	7 + 1	Sharm El Sheikh
December 23 - 30	Blue Force 2	North	7	Sharm El Sheikh
Dec 30 – January 7	Blue Force 2	North	7	Sharm El Sheikh



# RED SEA 2022

## Blue Force 2 & Blue Force 3

### Last Places Offer!!!



Boat	Routes 2022	Lower deck	Superior deck
		Double cabin (1 to 5)	Double cabin (6 to 9)
BLUE FORCE 2	North (7 nights)	890 €	940 €
BLUE FORCE 2	Extended North (7 + 1 nights)	990 €	1040 €
BLUE FORCE 2	Extended North (7 + 1 nights) <b>October 22 OFFER!</b>	990€ <b>840 €</b>	1040€ <b>890 €</b>

Boat	Routes 2022	Lower deck	Lower deck	Main deck	Superior deck
		Triple cabin (1 & 2)	Dbl. cab. (3 to 6)	Dbl. cab. (7 & 8)	Dbl. cab. (9 to 12)
BLUE FORCE 3	All routes (7 + 1 nights)	1290€	1350€	1350€	1490€
BLUE FORCE 3	<b>Last cruises places 2022 OFFER!!!</b>	<b>1090 €</b>	<b>1150 €</b>	<b>1150 €</b>	<b>1290 €</b>

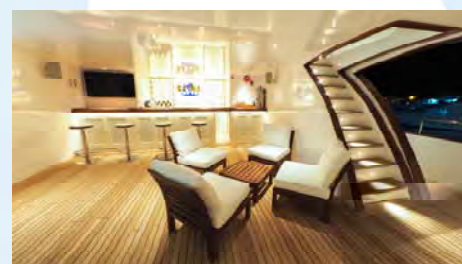
#### RATE PER PERSON PER WEEK INCLUDES

Meet & Assistance at Sharm El Sheikh airport (BF2) or Hurghada airport (BF3). Group transfers in the confirmed times. 7 nights on RED SEA BLUE FORCE 2 (BF2) or RED SEA BLUE FORCE 3 (BF3) on full board basis (water, coffee and tea included) in shared cabin. Dive planning depending on route. Air & S80 tank and weights. Diving guide. 1 night 5\* hotel on half board basis in Sharm El Sheikh (BF2) (except North route) or Hurghada (BF3). Travel, diving and cancellation insurance (see covers at [www.blueforcefleet.com](http://www.blueforcefleet.com)).

#### RATE PER PERSON PER WEEK DOES NOT INCLUDE

Flights. **Payment onboard:** Local and port taxes: 70 € (BF2) or 140 € (BF3), Service Fee: 70 €, Fuel increase: 70€. **OPTIONAL:** Tourist Visa for Egypt & assistance the embarking day at the Hurghada or Sharm El Sheikh airport: 25 €. Soft drinks and alcoholic drinks. NITROX: 50 €. Optional available with advanced booking: rental equipment, Sofnolime, S100 tank, extra tanks. Single hotel room in Sharm El Sheikh or Hurghada.

- 👑 General conditions, brochures, information of the boats and routes at [www.blueforcefleet.com](http://www.blueforcefleet.com)
- 👑 **Offer valid for new reservations made from October 14, 2022.**



<h4>ONLINE BOOKING BLUE FORCE CRUISES</h4> <p>Through our <b>Online Booking System</b>, you can easily check availability, <b>offers</b> and book online the Blue Force cruises in <b>the Maldives &amp; Red Sea</b>. Click on <a href="http://www.booking.blueforcefleet.com">www.booking.blueforcefleet.com</a> and book you Blue Force Experience!</p>	<h4>RED SEA BROCHURE</h4> <p>You will find information about the boats, routes, prices, Schedule...  <a href="https://blueforcefleet.com/wp-content/uploads/Brochure_RED_SEA_EGYPT.pdf">https://blueforcefleet.com/wp-content/uploads/Brochure_RED_SEA_EGYPT.pdf</a></p>
---	--



RED SEA  
BLUE FORCE 2 





RED SEA  
BLUE FORCE 2 





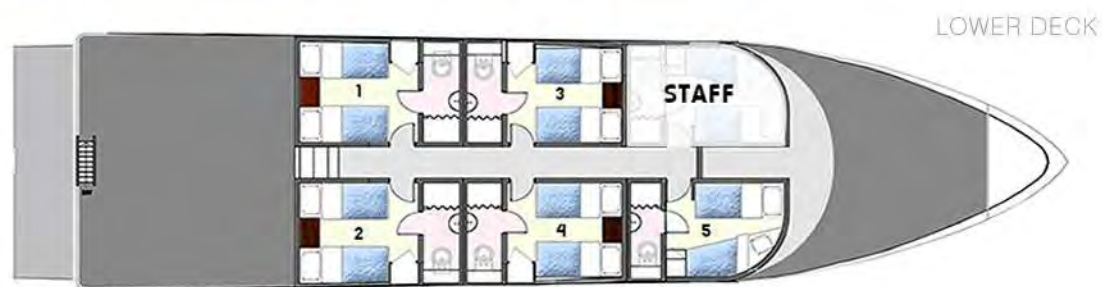
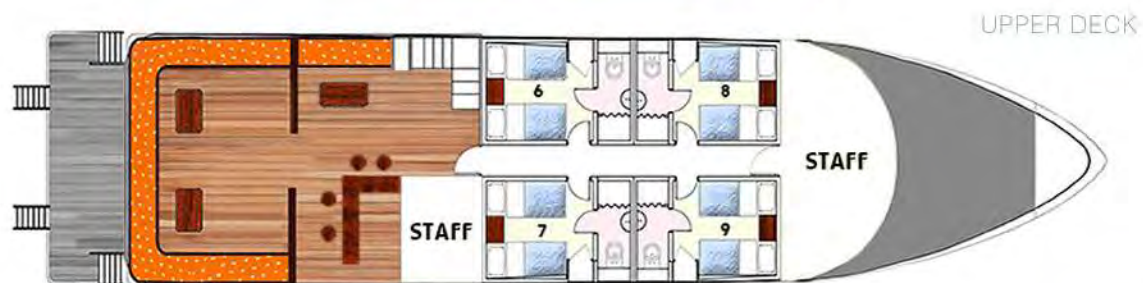
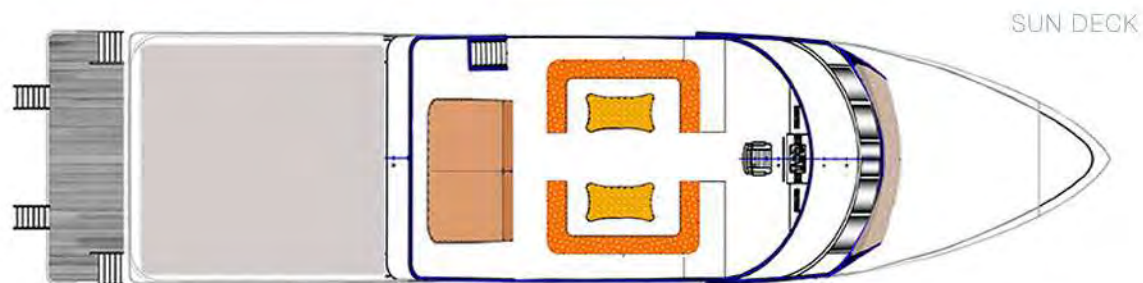
RED SEA  
BLUE FORCE 2 



- **Length:** 28 meters (92 ft).
- **Breadth:** 7 meters (23 ft).
- Maximum 18 divers in 9 cabins.



RED SEA  
BLUE FORCE 2





Sun  
Deck

RED SEA  
BLUE FORCE 2 



## OUTSIDE

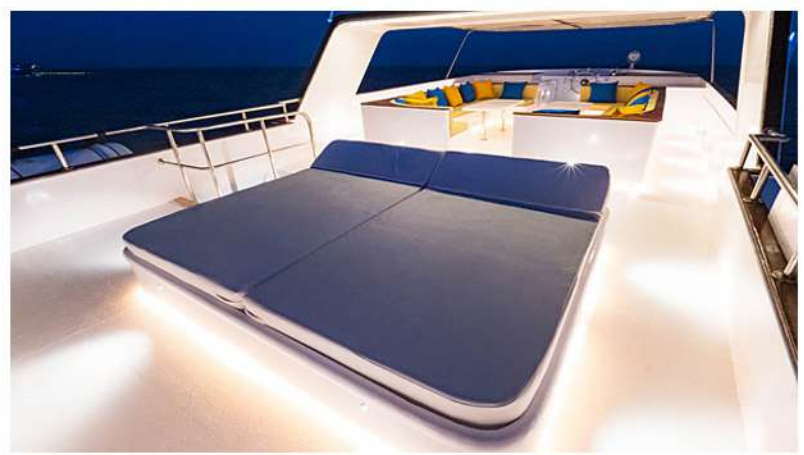
- Sun deck: Chaise-longue in stern area and sofas area.
- Main deck: Solarium in the bow, sofas in stern area and bar.





Sun  
Deck

RED SEA  
BLUE FORCE 2 





Upper  
Deck



RED SEA  
BLUE FORCE 2 





## RED SEA BLUE FORCE 2

### INSIDE

- **Lower Deck - Cabins 1 to 5:** 5 double cabins with 2 single beds, air conditioning, bathroom and shower.
- **Main deck:** Dining room and living room with TV and music.
- **Upper Deck - Cabins 6 to 9:** 4 double cabins with 2 single beds, sea view, air conditioning, bathroom and shower.

### DIVING

- Aluminum S80 tanks with both DIN and INT connections. NITROX.
- 2 tender boats

---

**OPTIONAL:** Rental equipment (dive computer, BCD, regulator, wetsuit, fins, mask...), S100 tanks, twin S80 tanks with manifold, S40 stage tanks, sofnolime, Helium.





RED SEA  
BLUE FORCE 2 



Main  
Deck



Lower  
Deck



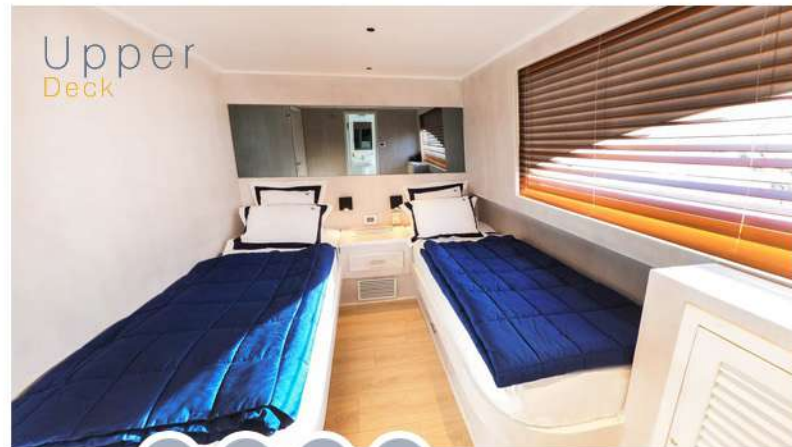
Cabins 1 2 3 4

RED SEA  
BLUE FORCE 2 



Lower  
Deck

Cabin 5



Upper  
Deck

Cabins 6 7 8 9





RED SEA  
BLUE FORCE 2 



[www.blueforcefleet.com](http://www.blueforcefleet.com)  [info@blueforcefleet.com](mailto:info@blueforcefleet.com)

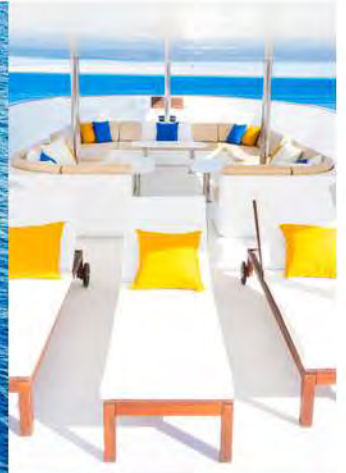
FOLLOW US ON



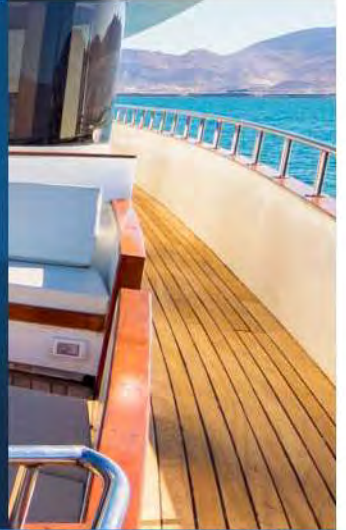


RED SEA  
BLUE FORCE 3 





RED SEA  
BLUE FORCE 3 





# RED SEA

## BLUE FORCE 3



- **Maximum capacity:** 26 passengers in 12 cabins.
- **Length:** 42 meters (138 ft) ; **Beam:** 8,7 meters (28,5 ft) ; **Draft:** 4 meters (13,1 ft).
- **Cruise speed:** 12 knots.
- **Fuel:** 26 Ton.
- **Engines:** 2 x 850 HP CATERPILLAR each.
- **Water:** 18 Tons plus 2 desalination units x 2 Ton/day.
- **Generators:** 2 x Perkins 120 kW; 1 x Caterpillar 80 KW.
- **Electricity:** 24 V, 220 V.
- **Navigation:** 2 36/48n.m Radar, 2 Ecosounder, GPS 2 LCD colour, 1 Chartplotter,  
Communications: 3 Radiotelephone HF, SSB, DSC, satellite phone.
- **Security:** Fire alarm, fire-extinguishing system, desfibrilator.





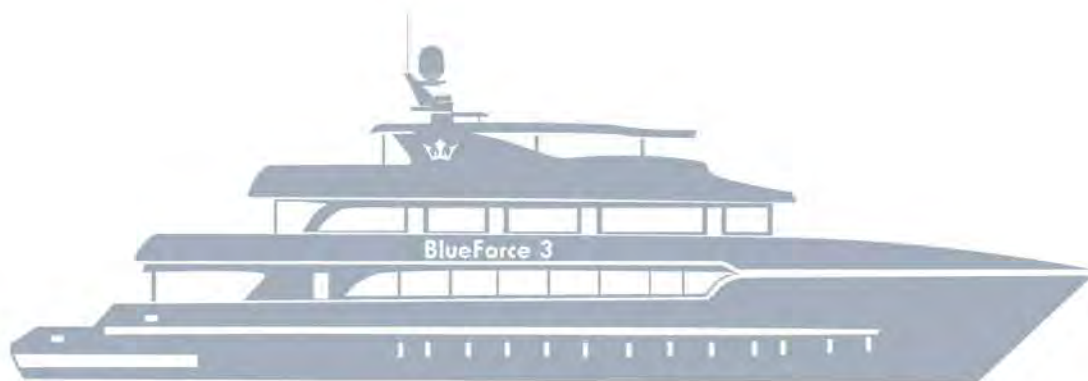


RED SEA  
BLUE FORCE 3 

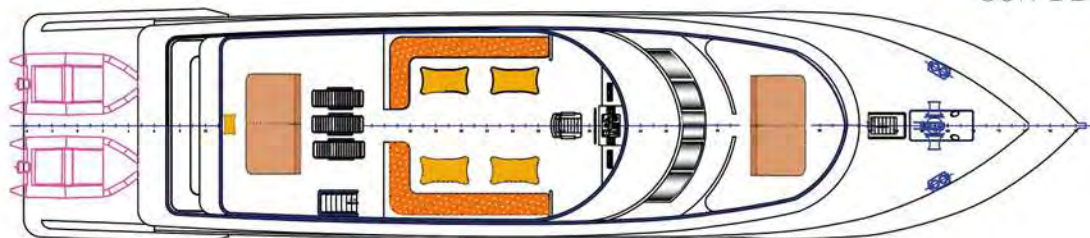


# RED SEA

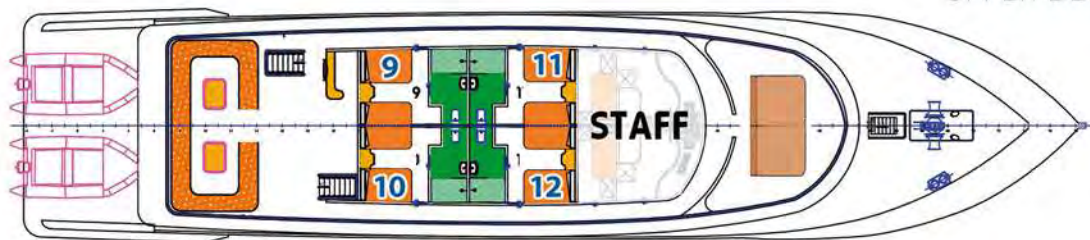
## BLUE FORCE 3



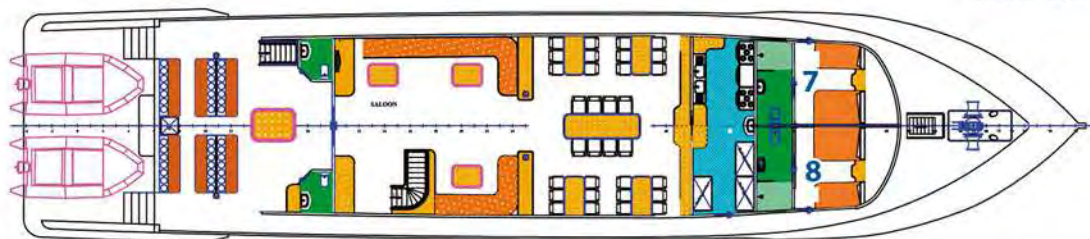
SUN DECK



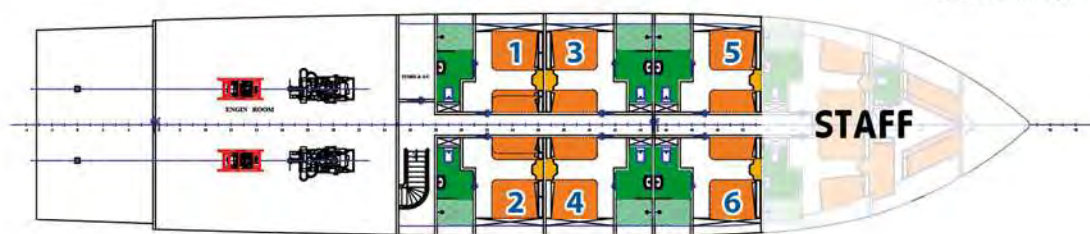
UPPER DECK



MAIN DECK



LOWER DECK



Sun  
Deck



RED SEA  
BLUE FORCE 3 



OUTSIDE

- Common areas: 2 wide solariums in bow and stern. Bar.



Sun  
Deck



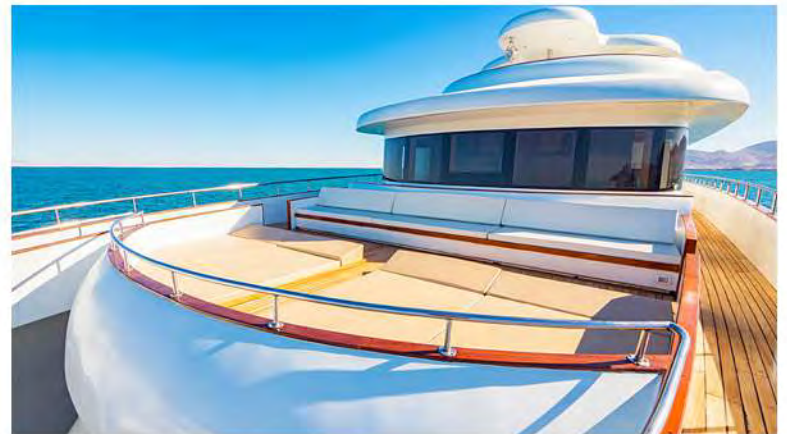
RED SEA  
BLUE FORCE 3 



Main  
Deck



RED SEA  
BLUE FORCE 3 





RED SEA  
BLUE FORCE 3 

## INSIDE

- **Lower deck:** 4 double cabins (3 to 6) with 1 double bed + 1 single bed and 2 triple / quadruple cabins (1 & 2) with 1 double bed + 2 single beds.
- **Main deck:** 2 double cabins (7 & 8) obstructed view with 1 double bed + 1 single bed.

- **Upper deck:** 4 double cabins (9 to 12) sea view with one double bed + one single bed.

All cabins have air conditioning with separate control and private bath.

- **Common areas:** Dining room in main deck and salon with TV. All common areas have air conditioned with separate controls.





Main  
Deck

RED SEA  
BLUE FORCE 3 



Lower  
Deck



RED SEA  
BLUE FORCE 3 

Cabins 1 2



Lower  
Deck

Cabins 3 4 5 6





Upper  
Deck



RED SEA  
BLUE FORCE 3 

Cabins    



Main  
Deck

Cabins  



Main  
Deck



RED SEA  
BLUE FORCE 3 



## DIVING

- Aluminum S80 tanks DIN/ INT. S100 tanks available on request.
- 3 compressors. 2 membranes NITROX system.
- 2 tenders 6 meters 85HP engine and 1 support Zodiac.





RED SEA  
BLUE FORCE 3 



[www.blueforcefleet.com](http://www.blueforcefleet.com)  [info@blueforcefleet.com](mailto:info@blueforcefleet.com)

FOLLOW US ON

